

Base Lake Recreation Area Pavilion and Picnic Shelters

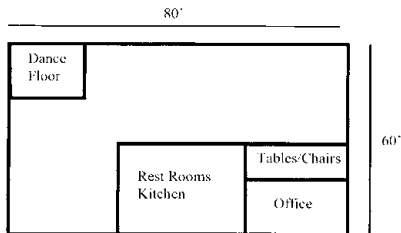


Area Specifications

Indoor Capacity: 230 seated with tables, 290 seated chairs only

Location & Parking: East side of lake on left side of road with 74 space parking lot. Overflow parking available in grass field.

Amenities: Inside there is a dance floor, men's and women's restrooms, kitchen with ice machine, 2 full-size refrigerators, double warming unit, microwave and double sink. Outside there is a large patio with picnic tables and grills nearby. A playground is also located nearby.



PICNIC SHELTER INFO & RATES

10:30 A.M. - 2:30 P.M., 3:30 P.M. - DUSK, ALL DAY

Shelter 1: \$30 / 4 hour block or \$60 / 10:30 a.m. - Dusk

Covered Capacity: 30-50 depending on picnic table configuration

Location & Parking: South of Pavilion, closest to Boathouse and sand volleyball courts. Parking available in grass field.

Amenities: ADA accessible covered shelter with 2 electrical outlets, 6-8 picnic tables, 2 charcoal grills and trash cans

Shelter 2: \$30 / 4 hour block or \$60 / 10:30 a.m. - Dusk

Covered Capacity: 30-50 depending on picnic table configuration

Location & Parking: South of Pavilion, closest to Pavilion and sand volleyball courts. Parking available in grass field.

Amenities: ADA accessible covered shelter with 2 electrical outlets, 6-8 picnic tables, 2 charcoal grills and trash cans

Shelter 3: \$30 / 4 hour block or \$60 / 10:30 a.m. - Dusk

Covered Capacity: 30-50 depending on picnic table configuration

Location & Parking: North of Pavilion, closest to Pavilion and sand volleyball courts. Parking available in grass field.

Amenities: Covered shelter with 2 electrical outlets, 6-8 picnic tables, 2 charcoal grills and trash cans

Shelter 5: \$40 / 4 hour block or \$80 / 10:30 a.m. - Dusk

Covered Capacity: 75-100 depending on picnic table configuration

Location & Parking: South of Pavilion, close to Community Accessible Park and playground. Parking available in grass field.

Amenities: Covered shelter with 2 electrical outlets, 10-12 picnic tables, 2 charcoal grills and trash cans

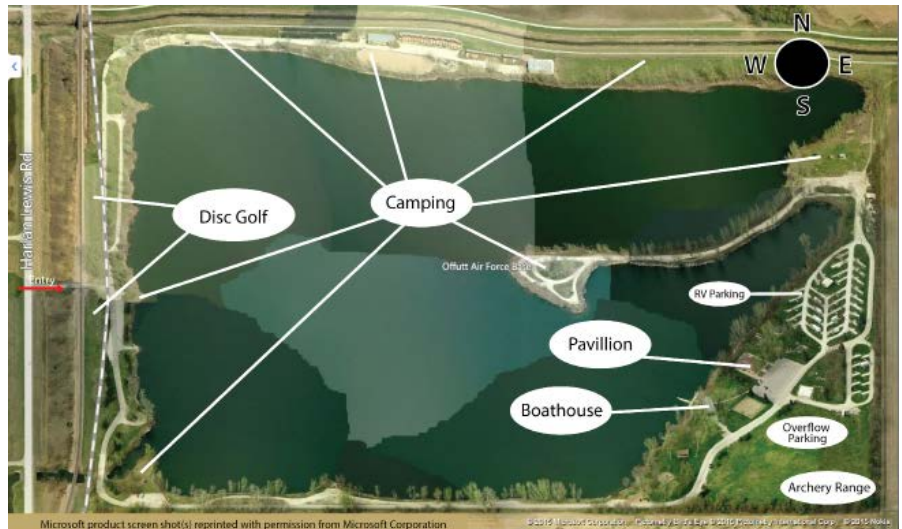
INDOOR PAVILION AND PICNIC SHELTER RESERVATION GUIDE

- Indoor pavilion reservations accepted one year in advance with signed contract and minimum 50% deposit due at time of reservation; remaining balance due 30 days prior to event.
- Picnic shelter reservations accepted six months in advance with signed contract and full payment due at the time of reservation.
- Pavilion cancellations must be made at least 30 days in advance for a refund to be issued. Shelter cancellations due to inclement weather will be offered an opportunity to reschedule in the same season prior to October 1 but refunds will not be issued.

PAVILION INFORMATION and RATES per day (10 a.m. - Midnight)

Squadron (Any Day)	\$150	Private (Fri & Sat)	\$300
Private (Sun - Thu)	\$250	Sponsored* (Fri & Sat)	\$400
Sponsored* (Sun - Thu)	\$350		

*Events that include non-DoD patrons



RULES AND REGULATIONS

- If alcohol is served/consumed the POC will ensure compliance with all rules relating to alcohol as specified on the rental contract to include the use of designated drivers
- Trash will be removed and placed in dumpsters and the area returned to its original configuration
- Pavilion tables and chairs will be returned to storage and stacked appropriately
- Areas not returned to original condition will result in a cleaning fee being assessed (\$25 for shelters and \$50-\$150 for the Pavilion)
- Guest supervision and conduct is the responsibility of the POC and at least one DoD ID card holder will remain on-site for the duration of a sponsored reservation
- Parking is the POCs responsibility and 2 parking coordinators are required for events with over 100 guests attending
- Overflow parking must be in the field and cannot be anywhere past the basketball courts or in the FamCamp or Archery Range areas
- All other general recreation area rules and regulations and those listed on the rental contract must be followed
- POC must pick up and return key to the Outdoor Recreation office in bldg. 362 on base during the off-season (Mid-April to Mid-October)



Base Lake Recreation Area

FamCamp & Cast-A-Ways Boathouse



FAMCAMP AND PARK GENERAL INFORMATION

- FamCamp open year round with limited water service mid-October through mid-April.
- 40 full service hookups with concrete pads, water, sewer, and 50 amp electric.
- 6 dry/overflow sites with gravel pads/picnic tables
- Advance reservations accepted from mid-April until mid-October by calling (402) 294-2108
- Reservations can be made up to 30-days in advance with non-refundable first night's payment
- Reservations held through 6 p.m. the first day of your stay unless approved for late arrival
- No check-in are allowed after 10 p.m. due to quiet hours
- Active Duty reservations for holiday weekends accepted 45-days in advance
- Off-season the FamCamp is first come first serve with on-site self-registration
- Tent camping is restricted to approved areas; see staff or diagram on display at boathouse



RULES & REGULATIONS

- Only DoD cardholders and authorized guests allowed
- 15 MPH Speed Limit strictly enforced on all rec area roads
- Quiet hours enforced from 10PM until 6AM
- Camping permits required, Campfires in pits only
- Anglers require Nebraska and Base Lake fishing permits
- No swimming or wading (to include animals) -- underwater hazards exist
- Parking in Designated Areas Only, No Parking on Grass or in Famcamp area
- No Personal Boats Allowed; Kayaks or Canoes Permitted
- Stop the Spread of Invasive Aquatic Species. Clean - Drain - Dry all Equipment!
- Pets must be leashed and are not permitted in water

CAST-A-WAYS Boathouse

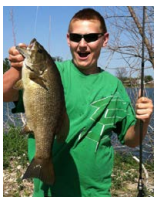
402-294-2108

Variety of food, snacks, beverages and beer available!

Camping

FamCamp Authorized User	\$20/night.....	\$550/30 days
FamCamp Sponsored Guest.....	\$25/night	
FamCamp Dry/Overflow.....	\$12/night	
Tent Camp (1 tent).....	\$9/night.....	\$50/week
Tent Camp Sponsored Guest.....	\$12/night.....	\$75/week
Group Camp Site (Up to 10 tents).....	\$40/night	
Group Camp Site (Additional tent).....	\$4/night	
Firewood.....	\$4/bundle	
Bag of Ice.....	\$2	
Other Camping Supplies.....	Price Varies	

Fishing



Offutt Base Lake Fishing Permit.....	\$6
NE State Fishing License.....	1 Day.....3 Day.....Annual
NE Resident.....	\$10.....\$31.....\$38
NE Non-Resident.....	\$13.....\$37.....\$76
Nightcrawlers.....	\$3.50/Dozen
Lures & Tackle.....	Price Varies

Base Lake stocked with: Walleye, Wipers, Crappie, Catfish, Largemouth Bass and Smallmouth Bass

Nebraska Game & Parks State Permits SOLD HERE!

No federal endorsement of sponsor/contributor intended.

Archery

Daily Pass.....	\$5 Individual.....	\$10 Family.....	\$25 Group (Up to 10)
Annual Pass.....	\$25 Individual.....	\$35 Family	

Includes use of bow, quiver, arrows and 3D targets in season during business hours. \$3 fee for lost arrows.

Boat Rentals

Boat Type.....	Hourly.....	4 Hours.....	Daily	Overnight**
Canoe/Kayak.....	\$ 6.....	\$ 18.....	\$30.....	N/A
Pedal Boat.....	\$ 6.....	\$ 18.....	\$30.....	N/A
Jon Boat.....	\$ 10.....	\$ 30.....	\$40.....	\$40*

*Daily rentals start at 10:30 a.m. and end at 5:30 p.m.

**Overnight rentals start at 5:30 p.m. and run until 10:30 a.m. the following day.

OUTDOOR RECREATION

Cast-A-Ways Boathouse

402-294-2108

**Summer Hours
(May 14 - Sept. 8)**

Sunday - Saturday 10:30 a.m. - 6 p.m.

Pre and Post Season Hours

April 16 - May 13

Mon, Tue, Thu, Fri, Sat..... 10:30 a.m. - 6 p.m.

September 9 - October 13

Mon, Tue, Thu, Fri, Sat..... 10:30 a.m. - 6 p.m.